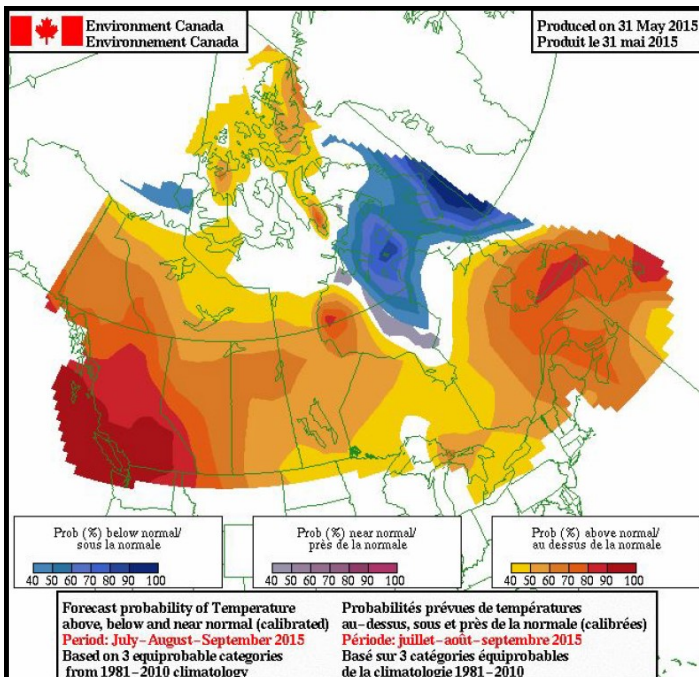




CARIBOO FIRE CENTRE

2015.06.26

Wildfire Newsletter



There is a high probability of warmer-than-normal conditions in B.C. through the summer and into the fall.

Inside This Issue:

Fire Season Outlook	2
Fire Danger Rating	3
Campfire Safety	3
Recreational Precautions	4
Current Fire Prohibitions	4
Weather Maps	5
Current Forecast	6
Cariboo Indices	7
Lightning Map	8

Predicting the fire season is like looking into a crystal ball. As we like to say around here, we'll tell you what kind of fire season it will be in November. That being said, there are a few indicators that guide how the Wildfire Management Branch gears up for whatever the fire season may bring.

According to Environment Canada, May was warmer and much drier than normal, resulting in the early disappearance of snow cover over much of the province. The loss of most of the snow exposed mid- and upper-elevation areas and led to drying conditions earlier than normal for forest fuels across most of B.C. This, coupled with strong drying conditions and significantly above-normal lightning during May, resulted in a very active, early fire season.

By the beginning of June, fire starts provincially were approaching one and a half times the 10-year average and the number of hectares burned had exceeded the average by more than six times.

Continued on Page 2...

Fires in the Cariboo Fire Centre since April 1, 2015

Zone	Fires	Hectares
Quesnel	12	170
Cariboo Chilcotin East	15	403
100 Mile House	29	19
Cariboo Chilcotin West	30	106

Follow us for up-to-date information:

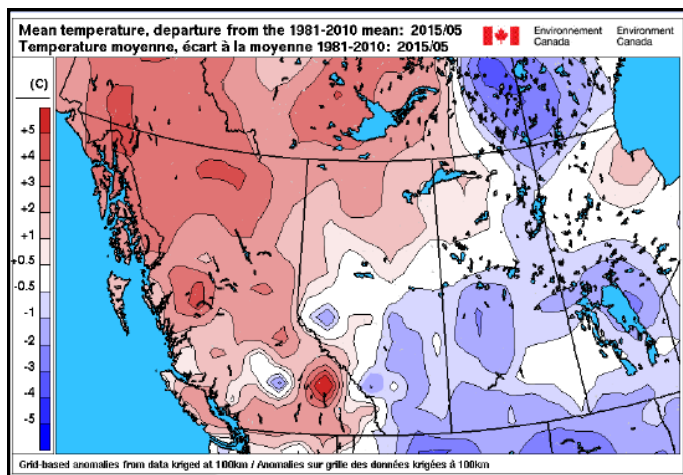


[BC Forest Fire](#)



[@BCGovFireIn-](#)

FIRE SEASON OUTLOOK



B.C. saw higher-than-normal temperatures throughout the month of May, as indicated by the shades of red.

Continued from Page 1...

The current long-term outlook for the summer indicates a potential for higher-than-normal temperatures for B.C. through the summer and into the fall of 2015.

Warmer conditions alone do not foretell an intense fire season, although they can contribute significantly, depending on the timing and intensity of rain events through the season.

The Wildfire Management Branch operates over 200 automated weather stations. The B.C. Fire Weather Network records hourly weather observations, which are used to support fire weather forecasting and the Canadian Forest Fire Danger Rating System (CFFDRS).

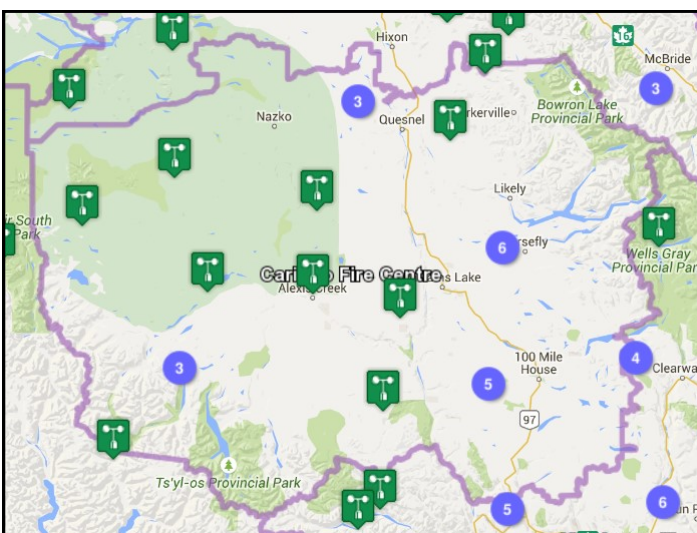
The computer-based CFFDRS, developed by the Canadian Forest Service, is the primary fire management decision aid in Canada. With it, fire managers can assess the potential for wildfire ignition, spread and burning intensity. This information is used for making fire prevention, preparedness and suppression decisions, as well as other general fire management decisions.

The Wildfire Management Branch also maintains its levels of preparedness by studying forecasts,

which provide a good idea of what to expect in the short term. When looking more than a few days into the future, these forecasts have a diminished level of reliability.

Each fire centre has an assigned fire weather forecaster. These forecasters issue general fire weather forecasts once or twice daily, depending on the severity of the conditions. They also provide point forecasts for three days ahead for each key weather station in their jurisdiction. On request, the forecaster will also prepare spot forecasts for individual fires, as well as outlooks for longer-range planning.

Regardless of the type of fire season, the Wildfire Management Branch is well-positioned to respond, with 1,600 employees and eight airtanker fleets located throughout the province.



The Cariboo Fire Centre has 28 weather stations located throughout the region.

Locally, the Cariboo Fire Centre has over 180 dedicated staff deployed throughout the fire centre. The Cariboo Fire Centre has access to helicopters and heavy equipment through contracts, and one airtanker fleet is based in Williams Lake. Additional staff and resources can be brought in from other fire centres, the Wildfire TEAMS program and other provinces, or people can be hired locally as required.

FIRE DANGER RATING

Forest Fire Danger



Currently, the forest fire danger rating is “moderate” to “high” throughout the Cariboo Fire Centre.

The Canadian Forest Fire Danger Rating System is a national system for rating the risk of forest fires in Canada.

Forest fire danger is a general term used to express a variety of factors in the fire environment, such as ease of ignition and difficulty of control. Each situation is different and dependent on many factors, including fuel types, terrain, weather conditions, slope, etc.

Information is collected from networked, automated weather stations and then used to calculate the forest fire danger rating.

The Danger Class Ratings and their meanings are:

Very low (blue)	Very low risk of fire starting.
Low (green)	Low risk of fire starting.
Moderate (yellow)	Moderate risk of fire starting. Exercise caution in forested areas.
High (orange)	Serious risk of fire starting. Extreme caution must be used. Restrictions may be applied to burning reference numbers and industrial activities.
Extreme (red)	Extremely high risk of fire starting. General forest activities may be restricted, including burn reference numbers, industrial activities and campfires.

CAMPFIRE SAFETY

One of the most important things you can do to keep your campfire safe is to select a proper site.

Along with keeping your campfire small, never leaving it unattended and ensuring that it is properly extinguished before leaving the area for any length of time, anyone who lights a campfire must ensure that there is a suitable fire guard extending one metre around the fire. Campfires can escape due to inappropriate site selection and an insufficient fire guard.

Establish your fire a sufficient distance away from flammable materials, including trees and wooden structures. This distance may need to be adjusted depending on wind conditions. However, if the wind is strong enough to carry sparks to any combustible material, do not light or continue using the campfire.

Remember, if no competent person remains close enough to respond immediately to a campfire escape, the fire is considered “unattended” and in violation of the Wildfire Act.

CAMPFIRE:

- Any fire smaller than 0.5 metres high by 0.5 metres wide

.....

REGULATIONS:

- You must have ready access to 8 litres of water or a shovel for the entire time your campfire is lit.
- Your campfire must be completely extinguished and the ashes must be cool to the touch before leaving the area for any length of time. (Hot coals can reignite the fire.)
- During campfire prohibitions, only a CSA- or ULC-approved portable campfire apparatus may be used, and the flame height must not exceed 15 centimetres.
- You must build a fire guard around your campfire.

RECREATIONAL PRECAUTIONS



In hot and dry conditions, forests and grass are very susceptible to wildfires.

Keep in mind that improperly discarded cigarettes, vehicle exhaust, fireworks and sparks from equipment can easily ignite a fire.

When there is an increase in the fire danger rating, the following precautions should be taken:

- Don't park motorcycles or ATVs on grass or areas where the exhaust system is close to combustible materials.
- Use an approved spark arrester on exhaust systems.
- Take all appropriate precautions with any other heat sources, such as campfires, outdoor stoves, barbecues or smoking materials.

CURRENT PROHIBITIONS

Currently, there is a Category 3 open burning prohibition throughout the Cariboo Fire Centre. **As of July 2, 2015, all open burning (Category 2 and 3 fires) will be prohibited, excluding campfires.** This prohibition will also include fireworks. Please visit bcwildfire.ca for current burning restrictions. More information will be distributed shortly.

CATEGORY 3 BAN

CATEGORY 3 FIRES ARE BANNED IN THE ENTIRE CARIBOO FIRE CENTRE

FOR MORE INFORMATION:

1-888-336-7378

WWW.BCWILDFIRE.CA

TO REPORT A PROHIBITED FIRE:

1-800-663-5555

**EFFECTIVE:
Noon, April 27, 2015**



CATEGORY 3 FIRE:

- Any fire larger than 2 metres high by 3 metres wide
- 3 or more concurrently burning piles no larger than 2 metres high by 3 metres wide
- 1 or more burning windrows
- Stubble or grass burning over an area greater than 0.2 hectares

REGULATIONS:



A fuel break must be established around any Category 3 burn area.



Monitor your open burn to ensure that the fire doesn't spread beyond its intended size.



You must have a burn registration number to light a Category 3 open fire. Call the burn registration line 1 888 797-1717 to obtain one.

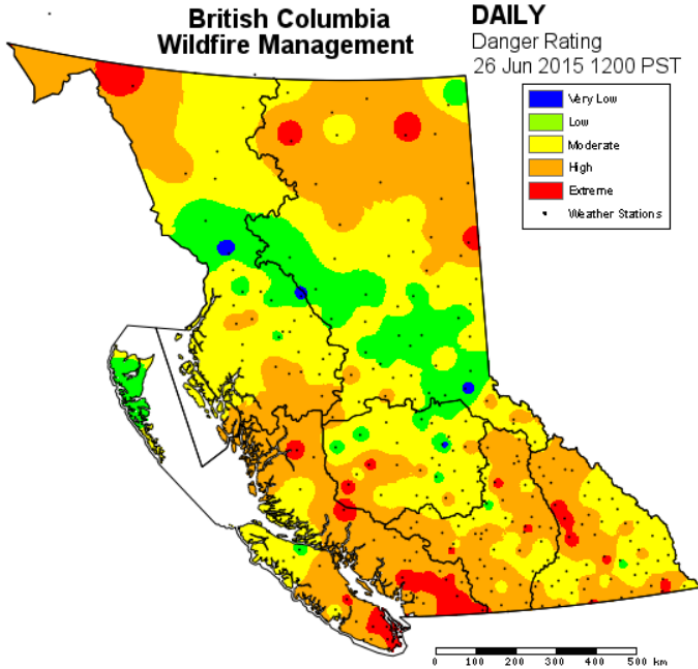


Do not burn when venting conditions are "Poor" or "Fair". Always check here first: www.bcairquality.ca/readings/ventilation-index.html

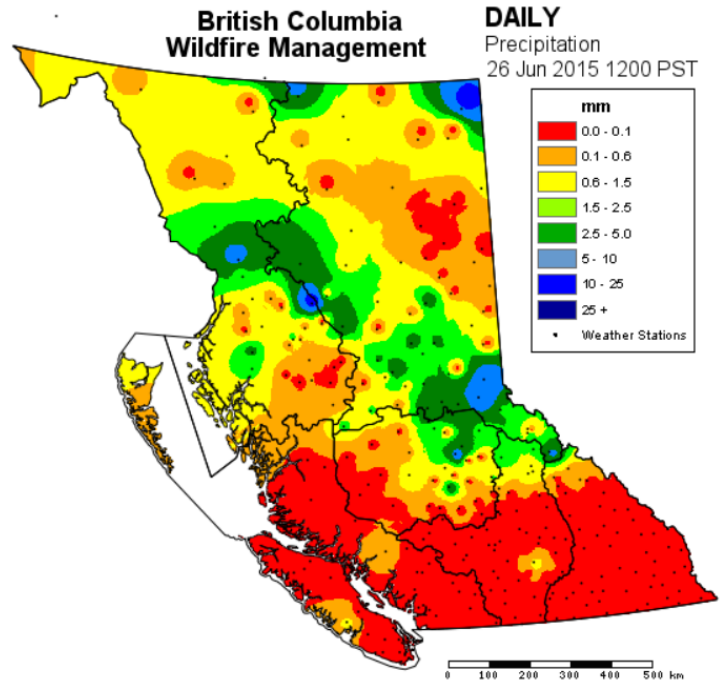


Anyone found in contravention of an open fire prohibition may be fined up to \$345. If your fire escapes and results in a wildfire, you may be fined anywhere from \$100,000 to \$1 million and be sentenced to one year in prison. Please check with local government authorities for any other restrictions before lighting any open fire.

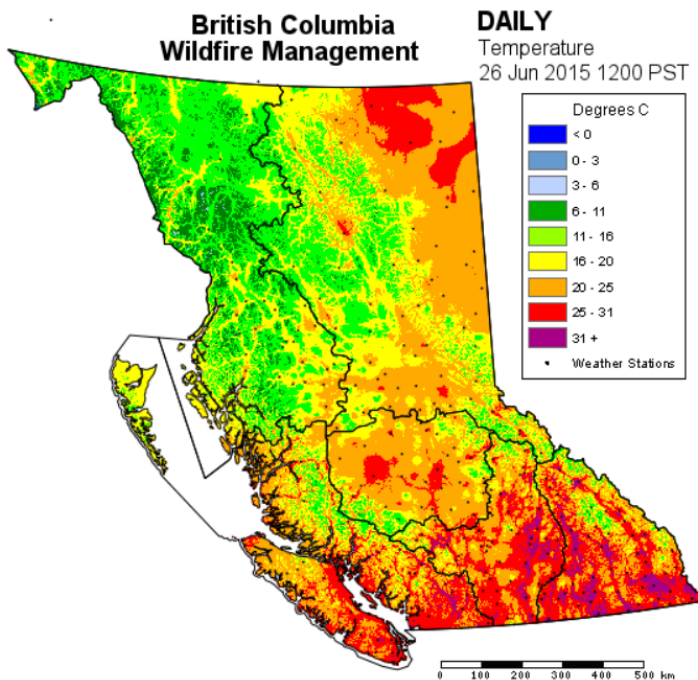
Fire Danger Rating



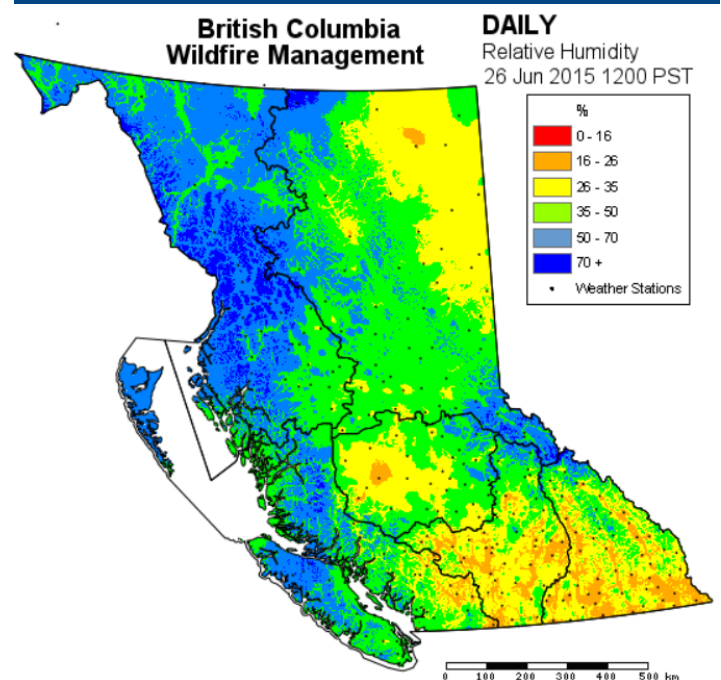
Precipitation



Temperature



Relative Humidity



These maps are current for June 26, 2015

For the most recent weather maps, please see www.bcwildfire.ca/weather

These graphs are for informational purposes only and should not be used to make operational decisions.

Most Recent Forecast for the CFC

Valid as of 8am Friday June 26, 2015

Cariboo Fire Centre Statistics

Since April 1, 2015:

Fires to date: 86

Hectares burned: 698

Person-caused fires: 46

Lightning-caused fires: 40

2014 at this time:

Fires to date: 63

Hectares burned: 683

Person-caused fires: 33

Lightning-caused fires: 27

2013 at this time:

Fires to date: 48

Hectares burned: 1,061

Person-caused fires: 41

Lightning-caused fires: 7

SYNOPSIS: The short range forecast is all about a strong upper ridge building northwards. With the associated warming aloft not expecting any convective concerns next couple of days. Daytime temperatures will rise into the low 30's C by Saturday. Windflow would appear to be light but there will be some late afternoon gustiness due to uneven heating. Overnight recoveries will be slowly declining through the period.

WEST OF FRASER

TODAY: Sunny with cloudy periods. Winds SE 15 km/h. Winds W 15 to 20 km/h late afternoon until early evening. Minimum relative humidity near 20%. Highs upper 20's C.

TONIGHT: Clear skies. Winds light. Maximum relative humidity 65 to 80%. Low near 8 C.

SATURDAY: Sunny and very warm. Winds south to southwest 15 to 20 km/h for the afternoon. Minimum relative humidity 15 to 20%. Highs low 30's C. Chance of lightning today 0%. Tomorrow 0%.

EAST OF FRASER

TODAY: Sunny with cloudy periods. Winds variable 15 km/h. Minimum relative humidity near 25%. Highs upper 20's C.

TONIGHT: Clear skies. Winds light. Maximum relative humidity 65 to 80%. Low 10 to 13 C.

SATURDAY: Sunny and very warm. Winds variable 15 km/h. Brief gusts to 20 km/h late afternoon. Minimum relative humidity near 20%. High low 30's C. Chance of lightning today 0%. Tomorrow 0%. Intense 0%.

3 to 5-DAY OUTLOOK: SUNDAY TO TUESDAY The strong upper ridge dominates for Sunday. Models are indicating some convective potential to our south so can't rule out the risk of dry lightning late in the day near the Coast Range. Hot weather with very low pm relative humidity values. Thermal belt conditions will lead to poor overnight recoveries at the higher levels. For Monday the upper ridge axis drifts eastwards which will allow the thermal trough to move to the eastern Chilcotin. Gusty winds for the western Chilcotin. Also on Monday the airmass becomes more unstable so that gusty afternoon winds possible in all areas of the fire centre. Isolated to widely scattered late day thunderstorms. For Tuesday there is still the potential for thunderstorm activity. The upper ridge flattens a little so not quite as warm. Gusty winds in association with convection and an increasing pressure gradient for the Chilcotin.

6 TO 10-DAY FORECAST: WEDNESDAY TO SUNDAY OF NEXT WEEK Models suggest that the upper ridge will rebuild over coastal BC and then drift inland for the end of the week. This will maintain the very warm weather and with a building ridge likely cut off the convective concerns for a few days at least. Winds gusty at first but then ease after midweek.

UPPER WINDS:

Puntzi 1000m SE 12 km/h 2000m SSW 15 km/h 3000m SSW 35 km/h

CONFIDENCE: Fair to good. Hot and dusty for the weekend. Having said that things will be firing up to our south as early as Saturday evening. For the Cariboo I would suggest going with just a risk for late Saturday in the far west. Isolated thunderstorm possibilities for Sunday. Possible nocturnal thunderstorms Sunday night and thunderstorms appear likely for Monday. Temperatures will peak over the weekend but cool back several degrees by Monday. Careful how you interpret cool as even on Monday we will be above normal. In the longer term - the ridge rebuilds for potentially another hot spell.

CARIBOO FIRE CENTRE INDICES

Valid as of 2:00 p.m. Friday, June 26, 2015

Wx Zone	Station	Status	Temp.	RH	Wind Dir.	Wind Sp.	Precip.	Grass Cure	FFMC	DMC	DC	ISI	BUI	FWI	Dgr. Cl.
5	SCAR CREEK	for	26.0	28	240	10	0.0	*	90.8	108	394	8.0	128	30.1	5
13	CARROTT LAKE	act	21.7	37	195	10	1.8	*	83.2	29	143	2.7	38	6.6	2
	KLUSKUS	act	22.0	33	127	8	1.6	*	84.5	37	195	3.0	50	8.7	3
	MOOSE LAKE	act	23.1	32	325	6	1.8	0	83.4	58	278	2.3	76	8.9	4
14	CHILAKO	act	23.2	33	145	8	0.2	*	90.9	39	247	7.4	55	18.9	4
17	ALEXIS CREEK HUB	act	25.1	28	176	9	1.4	*	88.7	95	621	5.5	138	23.9	4
	ANAHIM LAKE HUB	act	23.1	33	207	8	0.0	*	85.1	40	442	3.2	65	10.7	2
	BALDFACE	act	20.5	34	175	12	0.0	*	88.0	37	304	5.8	57	15.9	2
	BENSON	act	22.4	39	27	6	0.2	10	90.4	44	217	6.3	59	17.3	3
	CHURN CREEK	act	24.9	32	141	11	0.0	10	91.1	36	515	8.6	61	22.1	3
	GASPARD	act	21.2	42	83	13	0.0	10	88.8	33	346	6.8	54	17.5	3
	GAVIN	act	22.8	35	215	6	7.6	0	70.3	27	324	0.9	44	2.0	1
	HORSEFLY	act	25.5	42	197	7	0.0	*	90.9	40	366	6.9	63	19.1	3
	KNIFE	act	25.1	33	281	8	0.0	*	91.2	59	383	7.7	85	24.3	3
	LONE BUTTE	act	22.9	32	1	10	0.0	0	90.8	39	378	8.0	63	21.3	3
	MEADOW LAKE	act	24.4	36	163	11	0.0	10	91.0	60	507	8.5	93	27.1	4
	MIDDLE LAKE	act	28.1	18	216	10	0.0	*	94.6	148	401	13.9	154	45.7	5
	NAZKO	act	24.5	32	100	8	0.0	10	91.1	65	378	7.5	91	24.7	3
	NEMIAH	act	23.0	32	270	12	0.0	*	90.4	52	489	8.5	83	25.6	3
	PLACE LAKE	act	23.9	38	128	6	3.8	10	76.3	35	518	1.1	60	3.7	2
	PUNTZI MOUNTAIN (EC)	act	24.0	27	90	11	0.0	*	92.0	149	658	10.1	191	38.8	5
	QUESNEL (EC)	act	24.0	34	140	6	1.3	*	87.0	53	346	3.7	77	13.4	2
	RISKE CREEK	act	25.0	27	260	7	0.0	10	92.5	75	568	8.6	113	30.1	4
	TALCHAKO	act	26.3	36	55	7	0.0	*	88.3	114	388	4.8	131	21.3	4
	TATLA LAKE HUB	act	24.7	28	135	6	0.0	*	91.1	76	529	6.9	111	25.7	3
	TAUTRI	act	22.2	35	167	9	0.4	10	90.0	53	343	6.9	77	21.3	3
	TIMOTHY	act	24.1	38	248	6	0.0	*	89.9	48	263	5.8	66	17.3	3
	WILLIAMS LAKE (EC)	act	23.0	31	0	9	0.4	*	90.6	55	409	7.5	82	23.4	3
	YOUNG LAKE	act	25.7	28	134	8	0.0	*	92.2	46	466	8.7	74	24.5	3
18	DECEPTION	act	24.7	37	254	6	1.6	*	84.8	39	212	2.8	53	8.4	3
	WINDY MOUNTAIN	act	22.5	37	211	7	0.0	*	89.6	38	189	5.7	51	14.8	3
19	BIG VALLEY	act	18.4	56	240	11	3.2	*	70.3	18	196	1.1	30	1.9	2
	LIKELY RS	act	23.8	39	203	7	4.2	*	75.8	28	252	1.2	44	3.0	3

The FFMC (Fine Fuel Moisture Code) is a code that measures the dryness of fine fuels (grasses, needles, etc.). A number of 85 or higher indicates a good chance of a fire start from an ignition source. Once 90 or higher is reached, all the fine fuels are available to burn.

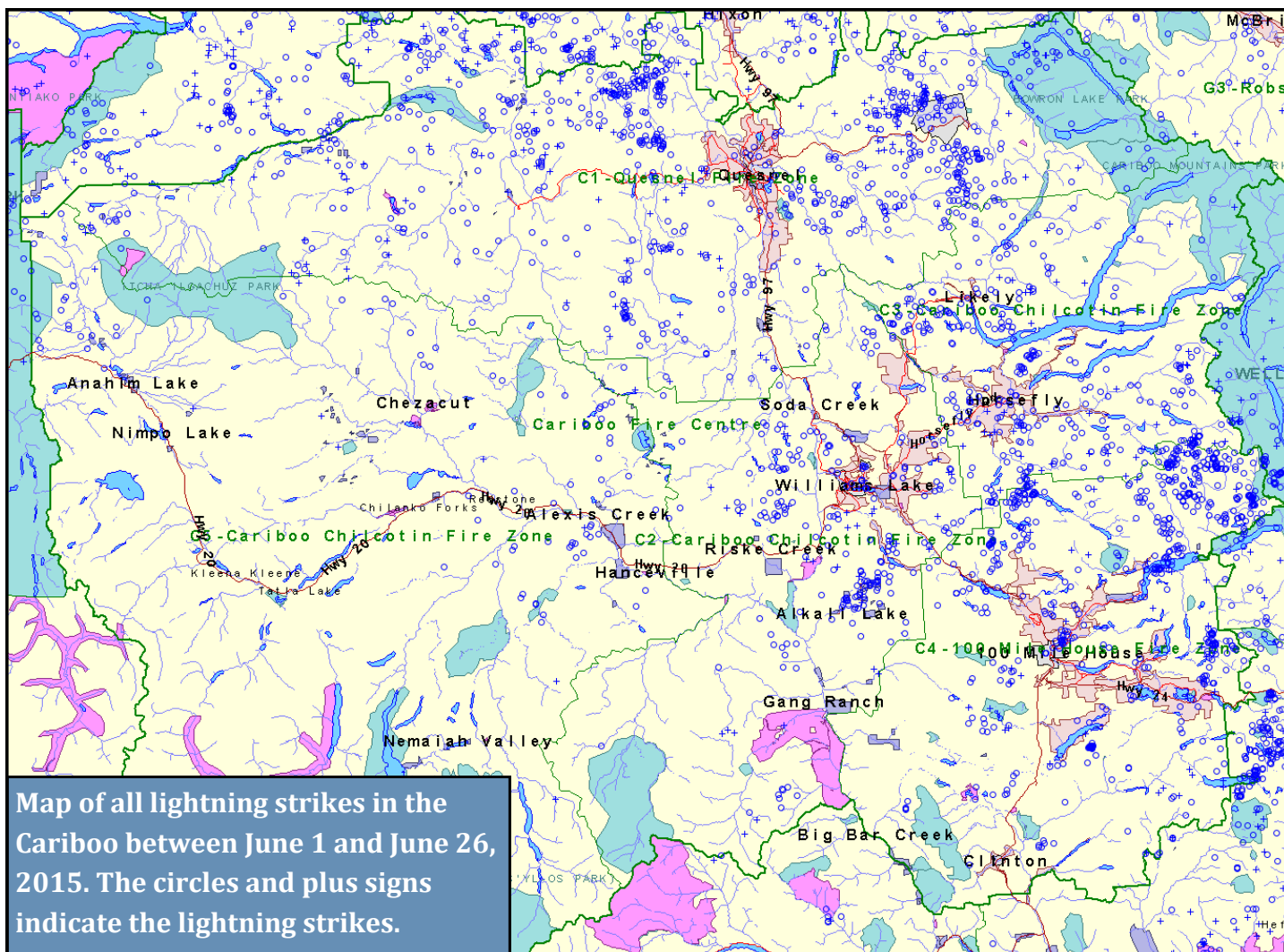
The DMC (Duff Moisture Code) measures about 10 cm into the ground and is an indication of whether a fire that starts will continue to burn in the duff. A

number of 40 or greater would indicate that a fire will continue to burn.

The DC is the Drought Code, measuring deeper in the ground. A number of 300 or greater indicates that the fire will burn deep into the ground, providing challenges to mop it up.

The Danger Class is the typical Fire Danger Rating that is seen on fire signage, where 1 and 2 represent "low", 3 is "moderate," 4 is "high" and 5 is "extreme."

CARIBOO FIRE CENTRE LIGHTNING MAP



CHECK OUT BCWILDFIRE.CA

For information on wildfires, prohibitions, fire danger ratings, FireSmart and more, visit our website: bcwildfire.ca

CONTACT INFORMATION

Report a wildfire	1 800 663-5555 or *5555 on a cell
Wildfire Information Line	1 888 3-FOREST
Burn Registration Line	1 888 797-1717
Cariboo Fire Information Officer	1 250 989-2665